

Fluidline stocks every basic bore and stroke of the standard Pancake® Cylinders. Numerous factory options are also available as special order.

CYLINDERS

SUFFIX OPTIONS

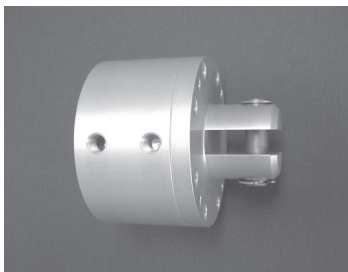
Male rod thread: Single rod	-MR
Double rod, rod end	-MR
Double rod, cap end	-MR1
Double rod, both ends	-MR2
PTFE seals	-T
Viton seals	-V
Quad seals	-Q
External guide, nonrotating for load guiding	-G
Hydraulic:	
Standard cover	-H
Thick cover	-HHC
Air service:	
Thick cover	-HC
1/4 NPT ports	-P14
Hole thru double rod shaft: 5/32" hole	-16
Plus size: 1/4" hole	-25
Finish: ProCoat™ (Electroless Nickel)	-N
Stroke collar:	
1/4" 1/8"	-C1
1/2" 3/8"	-C2
3/4" 5/8"	-C3
1" 7/8"	-C4
1 1/8" 1"	-C5
1 1/4" 1 1/8"	-C6
1 1/2" 1 1/4"	-C7
Sound limiters:	
Rod end	-LF
Cap end	-LR
Both ends	-LFR
Rubber Bumpers:	
Rod end	-BF
Cap end	-BR
Both ends	-BFR
Adjustable extend stroke (Full stroke adjustment is standard)	-AS
Adjustable retract stroke (Over 1" adjustment add desired length, e.g. -RS2)	-RS
Clevis mount: Ports in-line with slot	-PM
Ports 90° to slot	-SM
Magnetic piston & sensor mounting slot(s) Order sensors separately. Stroke length determines number of mounting slots.	-E

NOTE: The suffix -HHC and -HC are only available on 1-5/8 (221) or larger bores.

PIVOT (CLEVIS) MOUNT

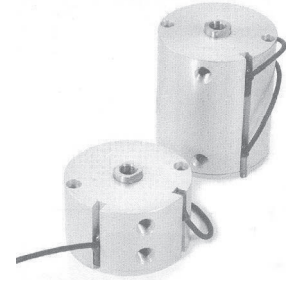
	OPTION
Ports in line with Slot	-PM
Ports 90° to Slot	-SM

Includes Pivot Pin & Clips



OPTION - E

Magnetic Piston and Dovetail Mounting Slots. Strokes are NOT affected by magnetic piston. Order sensors separately as shown below.



ELECTRONIC SENSORS

Pre-Wired 9" PART #	Quick Disconnect PART #	LED	CYLINDER MODEL	ELECTRICAL CHARACTERISTICS
9B49-000-031	9B49-000-331	YES	1/2 Pancake	Sourcing PNP 6-24 VDC 0.20 Amp Max current 1.0 Voltage drop
9B49-000-032	9B49-000-332	YES	1/ 2 Pancake	Sinking NPN 6-24 VDC 0.20 Amp Max current 1.0 Voltage drop
949-000-031	949-000-331	YES	All other Pancakes	Sourcing PNP 6-24 VDC 0.20 Amp Max current 0.50 Voltage drop
949-000-032	949-000-332	YES	All other Pancakes	Sinking NPN 6-24 VDC 0.20 Amp Max current .05 Voltage drop

FEMALE CORD SETS FOR QUICK DISCONNECT

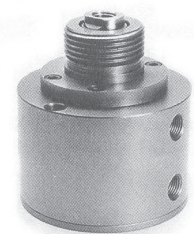
PART#	LENGTH
CFC-1M	1 METER
CFC-2M	2 METERS
CFC-5M	5 METERS

NOTE: fi" bore quick disconnect style supplied with 12" pigtail. All other bores supplied with 6" pigtail.



OPTION-F THREADED NOSE MOUNT

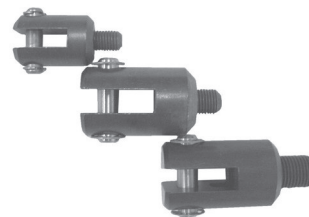
Threaded Nose with pilot diameter provides convenient, rigid and precision mounting. A hex nut mounting is included as standard and is also available separately. On bores 1-1/8, and 1-5/8 a urethane rod wiper is included as standard, to exclude dirt from the rod bushing and seal. Option -F is available on all Series, Bores; 1/2" (5) 3/4" (7), 1-1/8 (121), 1-5/8 (221), all Strokes, all Actions.



Consult FLUIDLINE for additional dimensional specifications, application and pricing information.

ROD CLEVIS

PART #	FITS CYLINDER	THREAD	MATERIALS:
RC-32	121	5/16-24 x .40	Clevis-Steel, Black oxide
RC-38	221	3/8-24 x .37	Stud-Steel
RC-54	321 AB & AA 521 AB	1/2-20 x .39	Pin- 416 Stainless steel
RC-56	321 A thru H 521 AA thru G 721	1/2-20x .62	PIVOT PIN AND LOCK RINGS SUPPLIED WITH EACH CLEVIS
RC-63	1221	5/8-18 x .75	



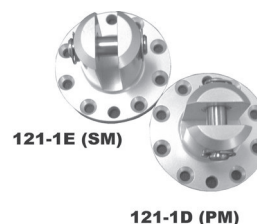
MALE ROD STUDS

PART #	FITS CYLINDER	THREAD	
121-MR	121	5/16-24 X .75	May be ordered as an option from the factory by adding Suffix ' -MR ' (please allow 2-3 weeks for delivery) <i>OR</i> for <i>immediate</i> delivery, order separately as shown.
221-MR	221	3/8-24 X .88	
321/721-MR	321,521,721	1/2-20 X 1.00	
1221-MR	1221	5/8-18 X .88	



PIVOT MOUNTS

PART #	FITS CYLINDER	PORT RELATION	
121-1D	121	INLINE	May be ordered as an option from the factory by adding suffix ' -PM ' for in-line ports or ' -SM ' for ports 90° from slot. (please allow 2-3 weeks for delivery). <i>OR</i> for <i>immediate</i> delivery, order separately as shown.
121-1E	121	90° TO SLOT	
221-1D	221	DUAL POS.	
321-1D	321	INLINE	
321-1E	321	90° TO SLOT	
521-1D	521	DUAL POS.	
721-1D	721	DUAL POS.	
1221-1D	1221	DUAL POS.	



HEAVY HYDRAULIC COVERS



PART #	FITS CYLINDER
221-1-C	221 (1-5/8" bore)
321-1-C	321 (2" bore)
521-1-C	521 (2-1/2" bore)
721-1-C	721 (3" bore)
1221-1-C	1221 (4" bore)

REPAIR KITS



PART #	FITS CYLINDER
121-RK	121 (1-1/8" bore)
221-RK	221 (1-5/8" bore)
321-RK	321 (2" bore)
521-RK	521 (2-1/2" bore)
721-RK	721 (3" bore)
1221-RK	1221 (4" bore)

Includes all standard Buna-N O-rings
And 4cc tube of Magnalube®G.

MOUNTING BOLTS



Fluidline stocks Socket Head Cap Screws to mount all Standard Pancake® Cylinders. Contact us for required size.