



### FEATURES

- Aluminum bar stock body, anodized black
- Honed & burnished bore

- Prelubed with Magnalube® - Grease
- Pressure balanced spool
- Delrin® spool
- Buna-N seals

### GENERAL SPECIFICATIONS:

- PRESSURE RANGE: TO 150 PSI
- Cv = see below
- OPERATING TEMP: 0 TO 180° F

## 3/8" Cv = 4.1



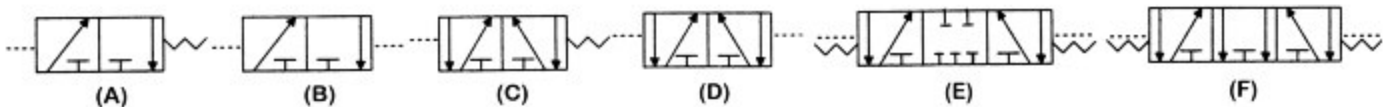
PART #	TYPE	FIG
<b>3-WAY, 2 POSITION</b>		
383SP	SINGLE PILOT, SPRING RETURN	(A)
383DP	DOUBLE PILOT	(B)
<b>4-WAY, 2 POSITION</b>		
38SP	SINGLE PILOT, SPRING RETURN	(C)
38DP	DOUBLE PILOT	(D)
<b>4-WAY, 3 POSITION</b>		
38DPB	ALL PORTS BLOCKED	(E)
38DPF	PORTS OPEN TO EXHAUST	(F)

## 1/2" STANDARD FLOW Cv = 4.1

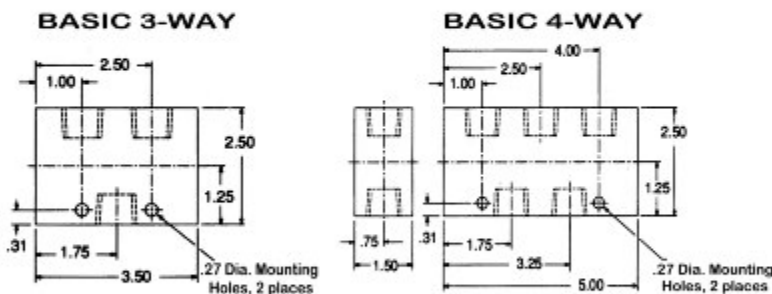
PART #	TYPE	FIG
<b>3-WAY, 2 POSITION</b>		
123SP	SINGLE PILOT, SPRING RETURN	(A)
123DP	DOUBLE PILOT	(B)
<b>4-WAY, 2 POSITION</b>		
12SP	SINGLE PILOT, SPRING RETURN	(C)
12DP	DOUBLE PILOT	(D)
<b>4-WAY, 3 POSITION</b>		
12DPB	ALL PORTS BLOCKED	(E)
12DPF	PORTS OPEN TO EXHAUST	(F)

## 1/2" HIGH FLOW Cv = 6.2

PART #	TYPE	FIG
<b>3-WAY, 2 POSITION</b>		
123BSP	SINGLE PILOT, SPRING RETURN	(A)
123BDP	DOUBLE PILOT	(B)
<b>4-WAY, 2 POSITION</b>		
12BSP	SINGLE PILOT, SPRING RETURN	(C)
12BDP	DOUBLE PILOT	(D)



### 3/8" & 1/2" VALVE DIMENSIONS



### 3-WAY SEAL KITS

**PART# 12PV-903**  
FOR USE IN VALVE#  
383SP, 383DP, 123SP,  
123DP, 123BSP, 123BDP

### 4-WAY SEAL KITS

**PART# 12PV-904**  
FOR USE IN VALVE#  
38SP, 38DP, 38DPB, 38DPF,  
12SP, 12DP, 12DPB, 12DPF,  
12BSP, 12BDP